

# District & Parish Gazette

Covering the parish of Langwith

Issue 3  
March 2023

## Building top quality homes fit for the future

- ✓ Super insulated to reduce energy bills
- ✓ Air source heat pumps
- ✓ Spacious, adaptable and robust
- ✓ 80% reduction in carbon emissions



**Councillor Steve Fritchley said "We are committed to building exceptional houses which are both environmentally friendly and economical to run,**

**because we want to provide lifetime homes for all our residents who choose to live in social housing.**

"Progress is not always easy or wanted but, here

in Langwith Parish, it is welcomed. Council housing, private housing, leisure, transport, business growth.

"Some authorities talk about progress - but here, in our parish, we make it happen."

# Your District Councillors

If ever you need to speak to your two Councillors please ring to make an appointment.



**Steve Fritchley**  
07976 707075



**Sandra Peake**  
07971 374397

## Contact Details

### Bolsover District Council

The Arc, High Street, Clowne  
S43 4JY. Tel: 01246 242424  
or email: [enquiries@bolsover.gov.uk](mailto:enquiries@bolsover.gov.uk)

### Langwith Parish Council

Jennifer Jeffery, Whaley Thorns  
Village Hall, Portland Road, Langwith  
NG20 9EZ. Tel: 01623 746498 or  
[clerk@langwithparishcouncil.gov.uk](mailto:clerk@langwithparishcouncil.gov.uk)

### Councillor Steve Fritchley

07976 707075 or [steve.fritchley@bolsover.gov.uk](mailto:steve.fritchley@bolsover.gov.uk)

### Councillor Sandra Peake

07971 374397 or [sandra.peake@bolsover.gov.uk](mailto:sandra.peake@bolsover.gov.uk)

**Disclaimer:** All rights reserved:  
Reproduction in whole or part  
without written consent is strictly

prohibited. BDC does not accept responsibility for any views expressed, or statements made, in signed contributions or in those reproduced from any other source. Information correct at the time of going to press.

## Equalities Statement

Bolsover District Council is committed to equalities as an employer and when delivering the services it provides to all sections of the community.

The Council believes that no person should be treated unfairly and is committed to eliminating all forms of discrimination, advancing equality and fostering good relations between all groups in society.

## Access for All statement

You can request this document or information in another format such as large print or language or contact us by:

- **Phone** – 01246 242424
- **Email** – [enquiries@bolsover.gov.uk](mailto:enquiries@bolsover.gov.uk)
- **BSL Video Call** – a three way video call with us and a BSL interpreter. It is free to call Bolsover District Council with Sign Solutions, you just need wifi or mobile data to make the video call, or call into one of our Contact Centres.



- **Call with Relay UK** via textphone or app on 0800 500 888 – a free phone service provided by BT for anyone who has difficulty hearing or speaking. It's a way to have a real time conversation with us by text.
- **Visiting** one of our offices at Clowne, Bolsover, Shirebrook and South Normanton.

# Member support for community groups

**We are well aware that sadly a lot of community groups and activities have been adversely affected over the past few years, firstly by COVID and more recently through the huge rise in the cost of living.**

Recognising that the district councillors for each local ward have a greater knowledge of what activities currently run in their own areas, Steve Fritchley, as Council Leader, has for this financial year allocated £1,000 to each councillor in order to give support to community groups in their area which may not be able to access other sources of funding, either to help keep them running or indeed to help establish new groups.

Councillors Sandra Peake and Steve Fritchley have so far allocated funds to Rhubarb Farm to purchase equipment for some new indoor sports sessions for service users which take place in the Village Hall at Whaley Thorns.

Several community groups already operate from the village hall and community centre in Whaley Thorns, including Inspire karate, residents bingo, Wednesday tea dance, and tai chi, but



Sandra and Steve are very keen to help with the creation of new community groups, in particular a drama group which they believe would be great to run from the centre at Whaley Thorns.

If this sounds interesting to you or indeed any other

community activities such as for example gardening, pottery, crafts, or dancing, please do get in touch.

[Sandra.peake@bolsover.gov.uk](mailto:Sandra.peake@bolsover.gov.uk)

[Steve.fritchley@bolsover.gov.uk](mailto:Steve.fritchley@bolsover.gov.uk)

# Message from the Chair of Langwith Parish Council

Dear residents,

**The past few years have been a long and difficult road for everyone in our community. The virus was uppermost in our minds and there's been no shortage of media coverage about keeping everyone safe. Parents and carers in our community found things difficult through the lockdowns; trying to care for their loved ones.**

It's been a rough few years but Langwith Parish Council and Bolsover District Council have worked together to provide for you all.

During lockdown the Remembrance Day services could not take place in 2021. Reverend John Draycott (who is now retired) said a few words at the cenotaph at the Holy Cross Church and wreaths were laid also at St Luke's to remember the 121 lives lost in our Parish.

A church service was held in 2022 at the Holy Cross and St Lukes Church by Reverend Ellie Launder Brown and a parade to the cenotaph ending with a service on

the Village Green took place in conjunction with Nether Langwith Parish Council which we hope to do yearly.

As some of our readers will remember this took place many years ago and I can remember parading with the St Johns Ambulance Brigade and Langwith Band and then returning to the Stute for a pint, in our case pop and crisps, many happy memories.

Our yearly deliveries of a selection box, apple and an orange ( fruit supplied by Wains fruit shop Shirebrook) to all our school children still took place during Covid for staff to give out to pupils, but last year it was delivered by SANTA (Mr Alan Staniforth) to our schools, the children were really excited and told Santa what they wanted for Christmas, so what was going to be a quick trip around the schools ended up a few hours, and poor Santa was ready for a rest, so thank you Alan oops Santa!!!

The Christmas lights were received well by our residents although there were some technical faults at Langwith Junction, but hopefully resolved for next year, we



will keep adding more lights through the Parish yearly.

The flower poles have been put in place ready for the display of flowers in the next couple of months to give a lovely display through our Parish in the summer months.

There are many holes appearing on our roads and these have been reported to DCC. Pit Hill has eventually been resurfaced but will no doubt have to be dug up again in places when the new houses start to be built – why can't builders and authorities liaise with each other better. The crossings on Main Street have now been repainted after being reported numerous times.

And lastly I am sorry to report that we did not save our Local Day Centre Services for learning disabilities, and our care homes, which were voted on in the Derbyshire County Council public consultation to remain open.

**So a BIG THANK YOU to all who signed and supported the petition.**



# Community celebrations back in full swing



**It was fantastic in 2022 to once again be able to host all the usual seasonal events for our community, including Halloween, Christmas, and Remembrance Sunday, but also especially the Queen's Platinum Jubilee.**

The Lemon Tree at Langwith catered for all these events, providing lovely children's party food boxes, cream teas

and Christmas dinners, and local entertainers Colin and Connie Fletcher provided the musical entertainment. And a big thank you to the Langwith Junction social club which hosted some of our events.

Once again this year we have planned to celebrate the usual events through the year, and of course this year we will be hosting some events to mark the coronation of King Charles III.

The first event for this year is a children's Easter Party scheduled for Thursday 6th April, which will be held in the village hall at Whaley Thorns. Tickets are now on sale from the village hall for this party, which is again priced at just £2 per child and this will include refreshments and entertainment.

**Tickets are first come first served and the closing date to purchase tickets for this event is March 27 2023.**



# A Dynamic District Council

**We are a creative and progressive authority which your Langwith councillors are proud to be a key part of.**

After the elections in 2019, we found ourselves unusually in the situation of having no party in overall control, which meant that councillors had to very quickly work together in partnership to ensure stability within the authority and to create a coherent and achievable plan of work for the civic term.

Your two District Council members for Langwith, Steve Fritchley and Sandra Peake have played a crucial part of this process. As Leader of the Council, Steve Fritchley selected a cabinet which included independent councillors in order to bring stability to the authority and thereby ensure the best possible benefits for the people living in our District. Councillor Sandra Peake has been a very active Cabinet member working on her portfolio looking after housing in the District.

In the last few years there have been very significant changes in our operations, with many of the services which had previously been shared with other authorities being brought back under our sole control to ensure that our residents get the best services.

Despite having to deal firstly with the effects of a worldwide pandemic, and now also with the spiralling cost of living, we have through all this continued to work creatively to progress our overall goal of economic growth for our District.

When Wards recycling collapsed in 2021 we quickly stepped in, brought the service back in house and ensured a seamless transition for residents meaning there was no disruption to your bin collection service, and we have since increased the scope of materials we collect to include soft plastics well ahead of government requirements.





We embarked on a £36m scheme – Bolsover Homes – to build quality houses for the benefit of people who choose to live in social housing. Schemes to improve the insulation of existing properties and refurbish independent living centres are also ongoing throughout the District as well as work to support those living in private rented properties, and taking action against rogue landlords.

Our PALS (Physical Activity and Lifestyle Support) scheme is there to support our residents in adopting healthier lifestyles and accessing any necessary help.

Our Environmental Health Service has recently secured a grant of almost £1m from DEFRA to improve air quality across the District and we have also embarked upon a massive tree planting initiative again across all areas of Bolsover District, potentially including some of the Portland Road Recreation Ground..

A District wide CCTV scheme is being introduced which parishes are able to opt into

*A £1m grant secured to improve air quality across the District.*



should this be something they feel would be helpful in their local area.

In short, we have always been mindful that we have a growing population who need jobs and homes and this is what underpins our ambitions.

The most recent, and probably the most momentous and brave decision by us has been to create the Council owned company Dragonfly Development Ltd. Following the collapse of Woodhead Construction, with whom we had previously worked alongside in a joint venture

company called Dragonfly, we acted rapidly and decisively to take over all the sites already in progress and ensure they would be completed by taking Dragonfly into our sole ownership.

Like many other Councils up and down the country, we have seen our revenue support from Government greatly reduced in recent years, and the Localism Act of 2011 encouraged local authorities to supplement their own income and have more control over their locality. A wholly owned company gives us this opportunity to build the right homes, facilities, and commercial properties for the people of Bolsover District whilst at the same time bringing in an income stream which will go directly back into our coffers to support the services which are provided for our local residents.



# Robin Hood Line Community Rail Partnership

**The Robin Hood Line which is a Community Rail Partnership (CRP) runs from Worksop to Nottingham. With 13 stations in total, it cuts through various Parish, District, County and City wards.**

The Line is rich in heritage and has an abundance of nature, historical and leisure attractions within easy reach of the 13 stations.

The CRP is now a fully accredited line supported by the Department for Transport (DfT) working with East Midlands Railway as the main train operating company as

well as other partners. The CRP follows the Community Rail Development Strategy working on the four pillars as follows:

1. Provide a voice for the community
2. Promote sustainable, healthy and accessible travel
3. Bring communities together to support diversity and inclusion
4. Promote social and economic development

The CRP is supported by Bolsover District Council, Whitwell Parish Council, Elmton with Creswell Parish Council, Langwith

Parish Council, Shirebrook Town Council, Community Safety Partnership, Derbyshire County Council, Ashfield District Council, Mansfield District Council, Nottinghamshire County Council, and Community Rail Network, DfT, EMR and Cross Country Trains.

Rhubarb Farm here in Langwith are actively involved and have become station adopters. This has involved decorating the station for Halloween along with designing some art work and poppy displays for the train stations at Langwith/Whaley Thorns and Shirebrook as part of the routes to remembrance







and were invited down to Nottingham train station to lay a wreath as a mark of respect.

Future projects are in the development phase and this will include the heritage interpretation of the Robin Hood Line with history boards to be displayed at Langwith/Whaley Thorns Station. Running alongside this the network of local multi user trails are being

promoted through the dedicated [robinhoodline.com](http://robinhoodline.com) website and the archaeological way is also highlighted.

**Trains to Worksop and Nottingham are available from the Langwith-Whaley Thorns station.**

**For more information visit [www.eastmidlandsrailway.co.uk](http://www.eastmidlandsrailway.co.uk)**



## You vs train

Our Physical Activity and Sports Development Team together with the Community Rail Partnership are holding multi sports sessions alongside railway safety information to raise awareness of the train line dangers and to reduce anti-social behaviour at stations within the district.

The team are at Whaley Thorns MUGA on Thursday evenings from 6.30pm to 7.30pm.



# Working for the people of Langwith Parish

**Jennifer Jeffery has been the Parish Clerk and RFO for Langwith since 2017 and has overall responsibility for all the business of the Parish Council.**

Mick Glover and Simon Gascoigne work as caretakers for the Council and you will often see them around Langwith as they both work hard to keep everything in the Parish well maintained, including play areas, rubbish bins, grit bins, and recreation grounds. They also look after all the Parish buildings including the village hall and community centre in Whaley Thorns.

The newest member of the team is Deborah Watson, who

now takes care of the day to day running of the village hall and community centre, but also, more importantly, is working towards boosting the community use of these two buildings and helping to support local groups and community activities around Langwith Parish.

The village hall office is open for residents to call in if they have any queries, or to make bookings, or even to pick up free doggy poop bags. Opening hours are currently 9am until 12 noon on weekdays although this is under review to see what times may best suit local residents. If any changes are made this will be notified via the website and on parish noticeboards.



*Picture above: Jennifer Jeffery, Parish Clerk.*

The office telephone number is 01623 746498.

**Or you can email Deborah on [admin@langwithparishcouncil.gov.uk](mailto:admin@langwithparishcouncil.gov.uk)**



*Pictured (left to right): Deborah discussing plans for Langwith with Bolsover District Council Leader Steve Fritchley, and caretaker Simon Gascoigne.*





# Our community buildings

**Whaley Thorns village hall, built originally in 1883 and the Community Centre building to the rear, built in 1903, both housed different schools over the decades, finally closing their doors to pupils in the late 20th Century.**

Each of the buildings are now beautifully refurbished and are used for the benefit of the local community. They are available for residents, businesses and community groups to hire for a multitude of uses, such as birthday parties, conferences, weddings, and sports and physical activity groups. Each building has a large hall as well as other smaller rooms which can also be used independently.

Inside the village hall building, as well as the beautiful main hall, you will find a library which is free for everyone to pop in and use, the council chamber used by Langwith Parish Council, but which also could be used for meetings and conferences, a well-equipped kitchen and also a bar facility.

## Bolsover TV recorded from here!

Bolsover TV, the popular video channel operated by us, which showcases all the positive events and activities which take place within the District, as well as providing updates on the work of the District Council is recorded right here in the Village Hall at Whaley Thorns!

**For any further information please contact Deborah in the office by calling 01623 746498 or by email [admin@langwithparishcouncil.gov.uk](mailto:admin@langwithparishcouncil.gov.uk)**





# Freedom Foundation – Release Holiday Club

**Release is a school holiday activity club where children can express their individuality and creativity as well as receiving support with their emotional wellbeing.**

Anna Malik who runs the session said “The Release programme is delivered over four days for four hours, it will enable you to explore who you are and how you want to be perceived. It will enable you to value your self-worth and understand that you don’t have to be “Liked” to be liked. Social media does not define you. You will be given the opportunity to share feelings and emotions in a safe space with your group, whilst enjoying music, dance and song writing to awaken your creative mind.

You will be introduced to street dance and hip hop techniques, learn a routine and a song along with understanding how to construct your own song or rap to express emotions.

You will receive your own Release t-shirt and song writing book

You will also be given a performance opportunity where you will share your work at the end of the week



showcasing what you have achieved.

The emotional impact of social media has left many young people with little or no confidence, unrealistic about their aspirations and goals, insecure and unsure.

You will have access to a safe space in which to explore your emotions through song writing, learn new skills and release anxieties through the power of dance and music.

*“The Release programme can be beneficial for families who are eligible for free school meals, vulnerable or have special educational needs.*

*“We are aware many families will now come under the new category of working poor – If*

*you believe you are eligible for this free holiday club then please get in touch – we’d love to hear from you.”*

Following the success of the sessions which were held here during the Christmas Holiday break, Release will be running again in the Easter Holiday (this time in the Community Centre building) on the 3rd, 4th, 5th and 6th of April.

The children will be provided with free food during the session.

**If you would like to register your child for this fantastic opportunity please email [info@freedomfoundationuk.org](mailto:info@freedomfoundationuk.org) or call them on 0115 993 2370**



# Bounce Back Anxiety Talking Group

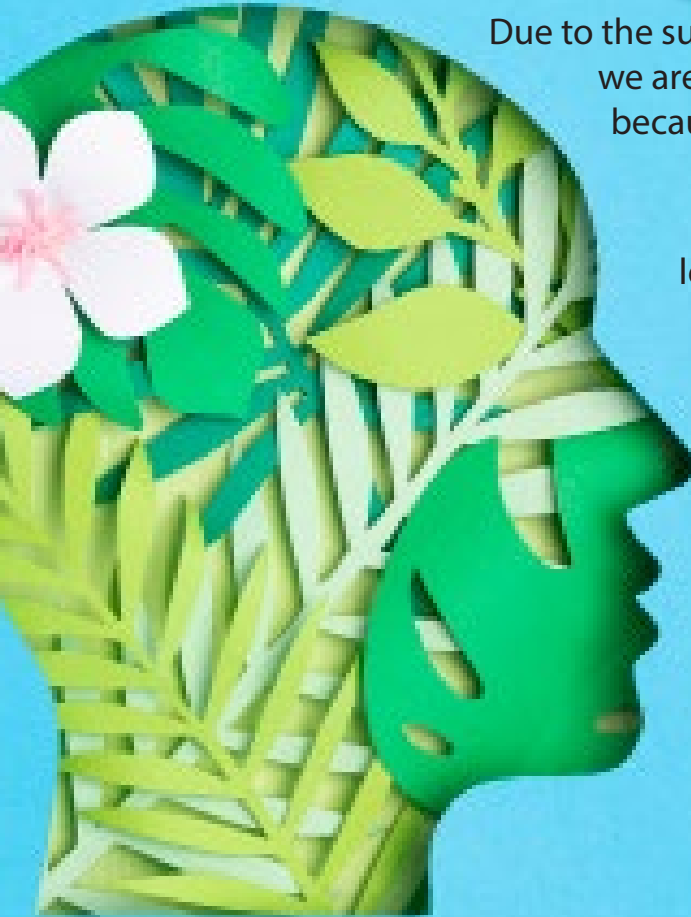
Due to the success of the first group we are running a second one because poor mental health is so debilitating.

The last attendees learned ways to change their lives. Why not see if you can too?

**It's FREE to all.**

**Saturday 4<sup>th</sup> March,  
10am–12noon  
for up to 12 weeks at:**

Langwith Village Hall,  
Portland Road,  
Whaley Thorns  
NG20 9EZ



**To secure your place, call or text our  
counsellor Tina on 07306 243407**

**Sponsored by the Langwith Society  
and Langwith Parish Council**



# Cycle and Explore

**Resources have been secured through the UK Shared Prosperity Fund to engage with our young people through 'cycle and explore'.**

These sessions will give young people the opportunity to take part in bike rides led by our walking and cycling

officer and the sports development team and will take place in Langwith and the surrounding areas.

Bikes and the relevant equipment will all be provided for participants to use.

This will be a fantastic resource for our young people to explore the

network of multi user trails as well as being able to access the Robin Hood Line.

We are very much focused on working with our young people and offering multiple services to engage with them, raise their aspirations and improve their skills.



# Youth Art Sessions



**Led by our Community Arts Development Officer, Mr Dan Oakley, we have been hosting art sessions for young people on Tuesday evenings in the Community Centre at Whaley Thorns, where an arts room and a music room have been established.**

There has been a lot of creativity and artistic input into the sessions. A volunteer from Carr Vale has introduced 3D model making and layered picture 'tiki mask' making to the group. A weekly 'pug window' is being created with the aim to fill all the window panes in the arts room and a recent session was themed around painting

to music.

The group is using resources from the MiXiT music programme as a kickstarter to the music work. As these resources were originally provided from the Covid recovery funds back in 2021, it is positive to see them providing more opportunities for the youth in this area.

The numbers of youngsters attending

the sessions has started off disappointingly small, but, interest is starting to grow and hopefully these sessions may be able to continue on into the summer.

There is a much longer term plan to make these spaces at Langwith permanent as a base of operations for the UKSPF (UK Shared Prosperity Fund) Youth Arts intervention work, which is planned across the District from 2023 to 2025. This is also a pilot programme for the Cultural Development Fund Bid for our District in the coming months. We have been designated as a Priority Place for the Arts Council to increase

both their involvement and funding as part of their 2020-2030 'let's create' strategy. We aim to align with this strategic vision in future to enable long term support and encourage more opportunities in the arts for all the people of Bolsover District, and again it is great that this is being established here in Langwith.

## Adult drama too!

It is also planned to start up some adult drama sessions in the community centre, and there will be a taster session on Tuesday March 21st 7-9pm. Do come along and give it a try!

There will then be a group of 6 sessions taking place from Tuesday 4th April, through to Tuesday 9th May.



# Extreme Wheels

**Langwith Parish Council has once again commissioned Extreme Wheels to run activity sessions for children during the school holidays this year.**

This will start at Easter and will operate on Tuesday 4 and 11 April from 1-3pm at the recreation field near the bowls club at Langwith Junction. Look out for the Extreme Wheels tour dates poster which will be on

our website and notice boards nearer the time for confirmation of the exact times and dates.



# Allotments

**Langwith Parish Council provides allotments for the benefit of the people of Langwith on Recreation Road in Langwith Junction.**

Recently a few new people have taken on allotments and so there are now just a few remaining plots. At the

low rent of £10 per year it is an ideal opportunity to exercise your green fingers, get some exercise in the fresh air and grow your own produce!

Current allotment holders will soon be receiving their annual rent renewal agreements by post and are kindly asked to pop into the

village hall with their annual rent and completed renewal forms

**If you are interested in having your own allotment please contact Deborah in the office in the village hall at Whaley Thorns. Email [admin@langwithparishcouncil.gov.uk](mailto:admin@langwithparishcouncil.gov.uk) or call 01623 746498.**





# A new home for Langwith Whaley Thorns Heritage Centre

**As Derbyshire County Council is closing and selling off the building in which it is currently housed, Langwith Whaley Thorns Heritage Association will now soon be reopening the Heritage Centre within the Community Centre building to the rear of the Village Hall.**

The Heritage Centre is a free small museum, run

by volunteers, which is dedicated to the representation of the heritage of the people of Whaley Thorns, Langwith and its surroundings. It contains a small display of village artefacts, lots of lovely paintings by local artists as well as a multitude of old photos. There are also local history books, postcards and other memorabilia available for purchase.

The Centre will be open on Wednesdays from 10am

until 3pm and on other days by appointment. The Association is hoping to restart its Heritage walking groups again from April and also has a new website currently under construction.

**For further details please contact Kath Sharpe on 07854 422036 or 01623 747895 or Family History Researcher Ann Taylor on 07803 607754 or 01246 731584.**



# Langwith Parish Council and Rhubarb farm - Working Together

**Langwith Parish Council is proud to be working in partnership with Rhubarb Farm on a number of initiatives to support the local community.**

Rhubarb Farm is a horticultural based environmental social enterprise which provides services and support to people with long term issues, or people who want to learn about growing their own fruit and vegetables. Rhubarb Farm offers a multitude of opportunities for its volunteers amongst other projects it runs a community cafés, food hubs, numerous learning activities and much more.

Starting on Friday April 14th at 10 am the Parish Council and Rhubarb Farm will be jointly operating a weekly food hub. The Food Hub will operate much like a market stall, but will be situated within the village hall and will be open to everyone. All

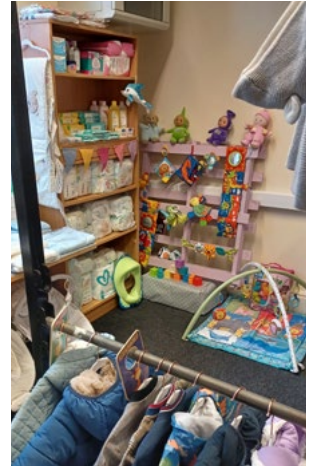


the food, which is provided by Fareshare will be available to purchase at a price of just £3 per bag. Customers will be able to fill their bag with whatever items they choose. The food hub will initially run for six weeks so do come along!

Wes, the training manager at Rhubarb Farm is starting weekly physical activity sessions in the village hall for their volunteers, who have multiple and complex needs. The sessions are intended to improve the physical and mental wellbeing of the participants who often are unable to access other similar projects.

Another super project supported by Rhubarb Farm, is Rhu-baby, which provides baby products for parents in the community and this great facility has also now moved into the village hall.

With the help of first time grandmother Janet Sofield,



Rhu-baby gives parents access to good quality new and pre loved baby products including clothes, nappies, and equipment all in one place. There are no prices on any of the goods, with people simply asked to make a small donation, which means that during these challenging times the items are all affordable for everyone.

The opening times for Rhu baby are Tuesdays and Thursdays 9am until 12pm - but the volunteers will be happy where possible to allow access at other arranged times should someone need baby items very urgently.

**Look out for other Rhubarb Farm initiatives and updates on their Facebook page.**

# Langwith Leisure Group

**Langwith Leisure and Recreation Group (LLRG) is a community group, supported by the Parish Council, which has ambitious plans to improve and upgrade all the leisure and recreational facilities within the Parish of Langwith.**

Members of the group are currently working on the design of a super new play area which will be installed at Langwith Junction Recreation Ground which is being funded through section 106 monies from the Gleasons new housing development on Primrose

Way. New five a side football pitches are also being planned for this recreation ground, as well as new planting of a community orchard, a concrete table tennis table, benches, and picnic areas.

At the Cockshut Lane Recreation Ground the group again has long term plans to improve the offer of outdoor activities on this site. It is hoped over time to plant trees to create a new orchard area, to improve the football facilities at the site, including hopefully a new pavilion and the creation of a perimeter running track. A super new outdoor table tennis table has very recently been

installed within the skate park area thanks to funding from Foundation Derbyshire and some new benches have been installed around the football pitch areas for the comfort of spectators.

Sadly we are still experiencing vandalism on our children's play areas, this costs a lot of money to repair which could be spent on other things. If you see this happening please do report it.



*Pictured: Chair of the Parish Council Sandra Peake, with Chair of the recreation group Brett Elliott explaining their plans to the leader of BDC, Steve Fritchley*