

# District & Parish Gazette

Local news for the  
parish of Langwith

Issue 6  
Winter 2024

## Boosting our community spirit!

**Now that the lonely days of the pandemic are becoming just a memory, it is great to see community spirit being rekindled in Langwith. People are once again joining in with lots of wonderful community events as well as new community groups.**

Of course a number of new businesses have also started up. We strive to support all such community activities as well as now helping, via our own development company, Dragonfly Development Ltd, to provide lovely new homes for the community too!

With spring just around the corner, we will soon see all the spring bulbs cheering up

the landscape (including the many new daffodils planted in Langwith by a group of volunteers and schoolchildren last Autumn!), but throughout this Gazette you can read about all the good work being done in the parish and how it is being supported by your District Councillors.



# Your District Councillors

If you have any issues relating to the District Council please feel free to contact either of your two councillors by email or phone to chat to or arrange an appointment to meet.



**Steve Fritchley**  
07976 707075



**Sandra Peake**  
07971 374397

## Contact Details

### Bolsover District Council

The Arc, High Street, Clowne  
S43 4JY. Tel: 01246 242424

or email: [enquiries@bolsover.gov.uk](mailto:enquiries@bolsover.gov.uk)

### Langwith Parish Council

Whaley Thorns Village Hall, Portland  
Road, Langwith NG20 9EZ. Call us

on 01623 746498 or email [admin@langwithparishcouncil.gov.uk](mailto:admin@langwithparishcouncil.gov.uk) or visit the website [www.langwithparishcouncil.gov.uk](http://www.langwithparishcouncil.gov.uk)

Please remember the Parish office is open for people to drop in on Tuesday, Thursday, and Friday morning 9am–12 noon.

**Councillor Steve Fritchley**  
07976 707075 or [steve.fritchley@bolsover.gov.uk](mailto:steve.fritchley@bolsover.gov.uk)

**Councillor Sandra Peake**  
07971 374397 or [sandra.peake@bolsover.gov.uk](mailto:sandra.peake@bolsover.gov.uk)

**Disclaimer:** All rights reserved: Reproduction in whole or part without written consent is strictly prohibited. BDC does not accept responsibility for any views expressed, or statements made, in signed contributions or in those reproduced from any other source. Information correct at the time of going to press.

## Equalities Statement

Bolsover District Council is committed to equalities as an employer and when delivering the services it provides to all sections of the community.

The Council believes that no person should be treated unfairly and is committed to eliminating all forms of discrimination, advancing equality and fostering good relations between all groups in society.

## Access for All statement

You can request this document or information in another format such as large print or language or contact us by:

- **Phone** – 01246 242424
- **Email** – [enquiries@bolsover.gov.uk](mailto:enquiries@bolsover.gov.uk)
- **BSL Video Call** – a three way video call with us and a BSL interpreter. It is free to call Bolsover District Council with Sign Solutions, you just need wifi or mobile data to make the video call, or call into one of our Contact Centres.



- **Call with Relay UK** via textphone or app on 0800 500 888 – a free phone service provided by BT for anyone who has difficulty hearing or speaking. It's a way to have a real time conversation with us by text.
- **Visiting** one of our offices at Clowne, Bolsover, Shirebrook and South Normanton.

# Community Events

**At the end of 2023 members of the community once again came together and enjoyed a number of wonderful community events hosted by the Parish Council.**

This started with a super spooky Halloween party for children, who all came along in a very impressive array of fancy-dress costumes and then at Christmas local children enjoyed another fun festive party which included a visit from Santa. At both these parties the children enjoyed lots of fun and games as well as yummy seasonal party food buffets, prepared by the Parish Council staff.

The Parish Council also kindly arranged for Santa to visit all the primary schools in Langwith to deliver fruit and a selection pack to each child.

The senior citizens of the parish were not forgotten and enjoyed a lovely three course Christmas lunch along with musical entertainment and a game of bingo too!

There will be lots more seasonal events for everyone to enjoy throughout the coming year, and the Parish Council has again agreed to sponsor Extreme Wheels to provide activities for local children during the school holidays, as well as trips to Pleasley Vale during the summer.

Do look out for adverts for future events on social media and on the parish noticeboards.

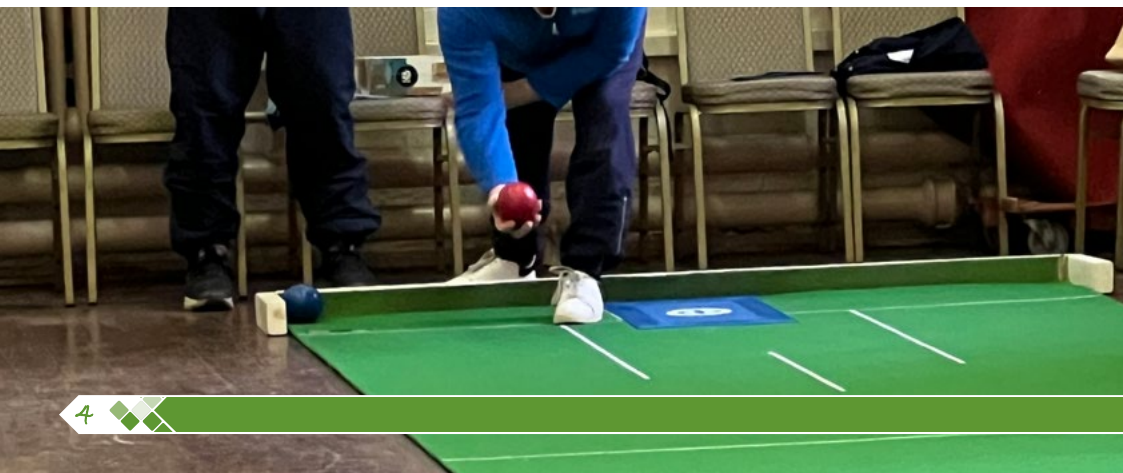




# Supporting community groups in Langwith

As your district councillors, Steve and Sandra receive £1,000 per year which they can use to support community groups or activities in their ward, and this year they have agreed to support:

- Over 50s Social and Activity Hub
- T'ai Chi
- Yoga and Reiki Group
- Messy Church
- Langwith Bassett Gardening Club
- Langwith Cricket Club
- Whitestar FC
- Riding for Smiles
- Whaley Thorns and Langwith Residents Association (Bingo Club)



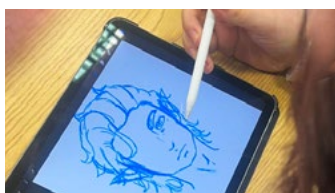
# Youth Art Sessions



**Since September 2023 youngsters have been able to enjoy the weekly Arts sessions provided by us in the Community Centre (old Sure Start) building at Whaley Thorns.**

During the sessions the young people have been trying out a number of new artistic skills, including watercolour painting, canvas printing, painting onto fabric bags and t-shirts, collage, and large format painting and many other artistic activities.

Since the New Year, as part of our district-wide 'Be Creative' Youth Arts and Technology project the group has decided they would like to explore moving some of these skills and techniques into digital projects and will be experimenting with digital drawing, vinyl printing, graphic design, and textile/pattern design.



# Building for the future

## **Our ambition to provide good quality council properties in areas of need is gathering pace.**

In the past month, five brand new bungalows on West Street in Whaley Thorns have been completed and the new tenants have moved in.

These bungalows provide the tenants with good quality, modern and energy efficient homes in an area where they want to live.

A stone's throw away on Moorfield Lane, five bungalows and two houses are being built to help alleviate the demand for older persons and family homes in the area. These homes are due to be completed in March.

Councillor Sandra Peake, Cabinet Member for Housing said, "We said we would build new council properties in the village and that is exactly what we have done. These twelve are on top of the nineteen

we had already built at The Willows and are helping to provide local people and families with a decent home."

It's not just housing that is being built, as work on the £9.6m Roseland Park & Crematorium adjacent to the existing cemetery in Shirebrook is progressing well. As you drive or walk past the site you will have noticed that ground works are being done and the steel framework for the buildings is being erected.



Roseland Park & Crematorium



West Street

This is the first of its kind in Bolsover District and will provide people with a place where they can celebrate the lives of their loved ones, whilst also offering space for reflection.

The development is due to be completed by the end of 2024 and will provide a state of the art facility which includes a tranquillity garden, a service hall, a flower courtyard, and gardens of remembrance.

All of the new council properties and the Roseland Park & Crematorium are being built by our company, Dragonfly Development Ltd.



Moorfield Lane

# Grow your own...

**Langwith Parish Council has a thriving allotment site based on Recreation Road at Langwith Junction.**

These allotments are extremely popular with Langwith residents and there is often a waiting list for renting a plot on the site.

The Parish Council is currently reviewing the allotment rules for plot holders as well as considering the annual rent which has been set at just £10 for many years. The allotments are a great way of growing your own produce as well as keeping fit and healthy both physically and mentally in the great outdoors. The Council is of course keen that all the plots be cultivated and if tenants are not making use of their allotment, they will be asked to vacate in order to allow people from the waiting list to start working on the land.

If you would like any further information about the allotments, or are keen to rent a plot yourself and join the lovely little community of allotment holders, please contact the Parish Office on 01623 746498, or drop in to the village



hall on Portland Road on a Tuesday, Thursday or a Friday morning between 9am–12

noon, or email [admin@langwithparishcouncil.gov.uk](mailto:admin@langwithparishcouncil.gov.uk)



# Working with Rhubarb Farm to benefit the local community

**Langwith Parish Council continues to work with Rhubarb Farm to benefit the local community.**

In order to enhance the much-appreciated Langwith Food Hub, it has been agreed that from March 1st, this hub will operate more in the way of a pantry.



The Langwith Food Pantry will still operate from the Village Hall on Portland Road in Langwith, but will be situated within the old caretaker house, where Rhu-Baby has been sited, and using the far pedestrian gate to enter.

The redesigned pantry will be open from 8.30–1.30pm on Friday 1st March, on Thursday 7th March from 1pm until 6.30pm and again on Friday 8th 8.30am until 1.30pm, and continuing this way on a weekly basis thereafter. Once again people will be welcome to stay for a cuppa and a natter.

The pantry will stock a variety of foods that will change from week to week. Rhu-Baby which



offers clothes and essentials for children and newborns, will be incorporated in this one unit.

Due to the increase in costs of the Fareshare membership, the cost of a full bag of food will now be £5.

**The new Langwith Food Pantry is open to all – why not pop in!**



# Meanwhile, up at the farm...

**Rhubarb Farm supports socially isolated adults and young people to gain life skills and confidence by empowering them to feed back into the community through food hubs, the community café, the low-cost farm shop as well as lots of community events.**

## Cookery course

The volunteers from Rhubarb Farm recently took part in a three week cookery course lead by Inspire Learning.

During the sessions they learned how to prepare and cook farm fresh produce to create a lunch for themselves. Core maths skills were practised when measuring and following guided cooking times, and also learning how to double up ingredients when needed for larger meals. All the volunteers enjoyed



going out and picking fresh ingredients, boiling eggs and learning how to make a meal from scratch, including a delicious omelette.

## Rhubarb farm shop

The lovely Rhubarb Farm shop is open from 10 am until 3 pm on Fridays and 10am until 1pm on Saturdays.

Here you will find freshly laid eggs, honey from the farm's

bees, jams, pickles and chutneys, and lots of wonderful freshly grown vegetables.

## Herb planting

Outside the Farm Shop a team of staff and volunteers recently made short work of planting a No Dig Herb Garden.

Rosemary, Thyme, and Lavender are just some of the herbs growing there which have been planted this year.

The herbs are used to support food work in the Rhubarb Farm café, to sell in the shop as well as to supply other local shops and restaurants.

Herbs are great for pollinators and Rhubarb Farm have used some in their workshops when the volunteers enjoyed making natural remedies and botanical dyeing.





## Ken's Art Group

**Ken's Art Group was named after group member Ken Brown, a retired art teacher, who at the grand age of 93 continues to actively help anyone new to the group with their art projects if they wish.**

This lovely friendly art group was originally set up by the Shirebrook Charity BLAST and meets every Friday afternoon from 1pm until 3pm at Langwith Bassett Hall in Upper Langwith. New members are always given a very friendly welcome.

Each member contributes £3 towards the rental of

the hall and trips out and Cllr Christine Dale bakes a Victoria sponge cake and other goodies each week for the group's refreshments!

All the members bring their own art projects to the group and produce their own work and journals in a variety of styles and mediums, whilst some members choose to simply colour pictures. Each session is very relaxing, there is no pressure at all and the members support each other.

During the year the group enjoys various trips out and last summer they went to visit the Yorkshire Sculpture Park. Around Christmas

time they had a delightful visit to Patching's Farm near Nottingham where some of their work was exhibited and just before Christmas some of their work was also exhibited in Shirebrook Library.

Anyone who is interested can come and see what the group is like at no cost for their first session to decide if they would like to join.

**For any further information please contact Cllr Christine Dale on 07811 995612 or email [Christine.Dale@derbyshire.gov.uk](mailto:Christine.Dale@derbyshire.gov.uk)**

# Langwith Whitestar FC



**Langwith Whitestar Football Club, who have received sponsorship from "Just Good Friends" which is based in Nether**

**Langwith, are continuing to have a successful season, and following a 3-1 win in the quarter finals are now for the third year running into the semi-finals of the Senior Cup!**

Whitestar are planning a further memorial match to be held in the summer – watch out for details of this once plans are completed. The team is also still working alongside the Parish Council to prepare funding bids in order to secure a much-needed new pavilion.

There are lots of opportunities to get involved with Whitestar Football Club,

who are currently looking for help with a "Groundsman" role which would involve helping with such things as pitch marking and preparing the changing rooms.

Whitestar would also ideally like to establish some youth teams as part of the club but do need some willing volunteers to manage them.

**If either of these roles are something you would enjoy or if you are interested in the club and would like to join or can help in any way, please contact the Club Chairman Kyle Barnes on 07860 226856 or email [Kylebar23@hotmail.co.uk](mailto:Kylebar23@hotmail.co.uk)**





## Yoga and Reiki in village hall

**The new Beginner Yoga and Reiki group which started up at the end of last year has already proved extremely popular and those attending are a wonderful bunch of lovely and supportive people.**

The sessions are held on Wednesday evenings and start with yoga from 6.30pm, followed by a lovely tea break and social chat and then continuing with 30 – 40 minutes of Reiki, with the evening finishing around 8.30pm. Everyone is welcome to join in with both sessions, or, if preferred just the yoga or the Reiki, but either way

the group will very much look forward to meeting new members.

Mother and daughter duo, Debs and Holly, who run the group have plenty of yoga mats available to borrow if you don't have one of your own.

Sessions are just £5 each and everyone is welcome to come along and join in at Whaley Thorns Village Hall, Portland Road.



**For any further information please contact Holly on 07707 080830, or Debs on 07909 818094.**

# Over 50s Social and Activity Hub

**The new Over 50's Social and Activity Hub which started in the autumn has also proved to be very popular.**

Those who attend have been enjoying gentle sports such as table tennis, indoor short bowls, bocchia, cornhole, and badminton amongst many others, as well as quiet board games. All activities are there to suit the energy levels and capabilities of the participant with the simple emphasis on enjoyment and keeping active.

The group always enjoys a very sociable cuppa and a snack part way through the morning during which everyone has the chance to catch up and join in with some lively topical conversations!

Why not come along and join the friendly bunch on Thursday mornings from 10am – 12noon in the Village Hall on Portland Road, Whaley Thorns.

All sessions until the end of March 2024 have been funded through our Active Communities funding.



After this time it is hoped that the group will become self-funding and self-administering and that it will continue to be a lovely place for any over 50s to come along and keep active and meet new friends.

To help this to continue, Cllrs Sandra Peake and Steve Fritchley have very kindly donated £300 of their Councillor Community Grant monies which will help the group to be sustainable in the longer term and to purchase some indoor games equipment.



# Wednesday Walkers

**Langwith and Whaley Thorns Heritage Centre is now settled into its new site in the Community Centre building – (the old primary school to the rear of the Village Hall at Whaley Thorns.**

As well as having a wealth of interesting information and artefacts pertaining to the village, the Heritage Centre also offers guided walks on alternate Wednesdays.

Each walk is under five miles and lasts around two hours with a start time of 10am.

Anyone joining the walk is able to order lunch when they

arrive, which will be ready for their return at around 12noon.

The walking guide will talk about the area and its history and there is also a chance to see the alpacas!

If you would like to join in then it is requested that you kindly arrive at 9.45am to allow time to sign in. There is ample parking on site and toilets are available.

The schedule for walks this year is on the second and fourth Wednesday of each month as detailed opposite, although all walks are of course weather permitting.

- March 13th and 27th
- April 10th and 24th
- May 8th and 22nd
- June 12th and 26th
- July 10th and 24th
- August 14th and 28th
- September 11th and 25th
- October 9th and 23rd
- November 13th and 27th
- December 11th – to be followed by a Christmas lunch.

**For any further information about the walks or the Heritage Centre, please call 07854 422036 or 07803 607754.**



# Community Centre welcomes a new business

The Community Centre building to the rear of the Village Hall on Portland Road, Whaley Thorns, (previously Sure Start) hosts many different community groups as well as providing space for a number of local businesses.

Just recently another new business moved into the centre.

Barton HR is a consultancy service offering a “no-frills hands-on approach” able to cover anything employment related.

Director, Sharon Goodman, has over 25 years of extensive knowledge and experience in all aspects of HR Services

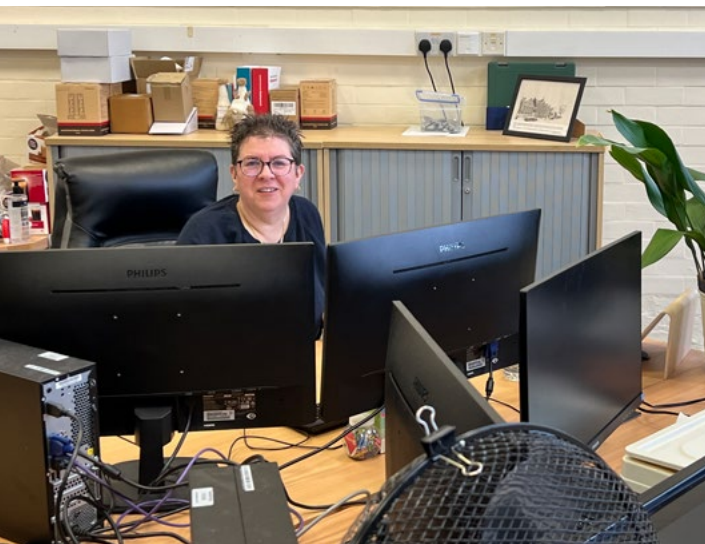


and Employee Relations. Sharon provides a cost-effective service and can work in person or remotely to ensure that businesses are legally compliant and can

manage any employee issues in accordance with current legislation. This service is ideal for any company that may not have the budget for an in-house HR service and covers any matters relating to staffing including policies, procedures, and contracts. Sharon is equally happy to work with businesses or indeed individuals who may need help with their employment rights.

Sharon is currently working for several businesses in and around Langwith and Shirebrook.

**For further information about Barton HR email [bartonhrservices@outlook.com](mailto:bartonhrservices@outlook.com), visit [www.bartonhrservices.co.uk](http://www.bartonhrservices.co.uk) or call 07917 850230.**





## The Countess and Earl of Devonshire Upper Langwith Charity

Charity Registration No 527031  
Regulated by Scheme of the Charity  
Commission dated 20th June

### Funding available

The charity provides assistance towards the costs of university or college education, apprenticeships, vocational training schemes, equipment required for their courses, or any other ways in which young people are following in order to develop the necessary skills and qualifications for their chosen trade, career or profession.

The Trustees would urge young people to apply to this

local charity as it may be able to offer a grant in support of any costs incurred relating to your learning/training. For example – Books, stationary, equipment, instruments, work wear etc.

Funds are available to young people aged above normal school leaving age to 25 years old residing in the Upper Langwith area, however the Trustees also accept applications from surrounding areas when funds allow.

We have been able to support over 100 young people in

local areas in recent years and we have funding available for immediate release.

**All enquiries should be made to [langwithdevonshirecharity@hotmail.co.uk](mailto:langwithdevonshirecharity@hotmail.co.uk) or in writing to:**

*The Clerk to Local Trustees,  
The Estate Charity of  
the Countess and Earl of  
Devonshire,  
c/o Shirebrook Town Council,  
Shirebrook Town Hall,  
209 Station Road,  
Shirebrook, Derbyshire,  
NG20 8AF*

## Eyes Down

**Langwith Residents Bingo Group meets on alternate Monday evenings from 6pm until 8pm in the Village Hall on Portland Road and are run by Parish and District Councillor, Sandra Peake along with Sarah Harrison.**

The bingo sessions are open to anyone and feature cash prizes, and the £1 entrance fee also covers light refreshments.

In December the group of bingo friends enjoyed a festive Afternoon Tea at Glapwell Nurseries followed by an

afternoon session of bingo back at the Village Hall.

During the coming year the group will be planning further outings as well as their fun Monday night bingo sessions.

For any further information please contact the Parish Council Chairman – Sandra Peake on 07971 374397.



# T'ai Chi Qigong with Georgina



**T'ai Chi Qigong is a style of exercise for health and wellbeing and is based on ancient Chinese practices.**

Georgina is a qualified teacher of T'ai Chi Qigong and aims to make her classes fun as well as beneficial for people's physical and mental health.

Each session incorporates movement and breathwork in a standing position. The group

is very friendly and readily welcomes newcomers, so no experience is necessary.

If you would like to give the classes a try, then come along to Langwith and Whaley Thorns Village Hall on Wednesday mornings from 10.30 am until 11.30am.

Georgina will be happy to respond to any queries about these classes and she can be contacted on 07761 556164.

## Winter Warmers

**The Langwith Society recently held their first Winter Warmer sessions on Sunday mornings in January. Those who came along were able to enjoy a cuppa and refreshments as well as a friendly natter in the warm!**

More regular sessions have now been confirmed during March and the time has been extended to include a lunch!

Please remember that the Langwith Society is also able to organise transport for those who do not have transport and live too far away to walk.



Langwith Bassett Community Hall

Rectory Road, Upper Langwith NG20 9RF



# Winter Warmers

Stay for 10mins, stay all morning or, new for Feb & Mar, stay for lunch.

Come and meet someone new, say hello to a neighbour or chat with someone you've not seen for ages.

Warm up after walking the dog, sit and read the Sunday papers, play board games or just watch the world go by.

**Sundays in March**  
**3rd; noon—2pm**  
**10th; 10am—2pm**  
**17th; noon—2pm**  
**24th; 10am—2pm**  
**31st; 10am—2pm**

**All Welcome.**

**Need a lift?**  
**Call 07432 337272 by noon the Friday before.**

# PLAY NOW

TO BOOST OUR FUNDRAISING



**Bolsover District**  
**LOTTERY**

Support our Community to  
achieve even more.

Join the Bolsover District  
Lottery and please select  
The Langwith Society  
as your good cause.

Tickets are £1 a week and you  
could win up to £25,000.



To buy tickets scan the  
QR code or go to:  
[bolsovercommunity-  
lottery.co.uk/support/  
the-langwith-society](http://bolsovercommunity-lottery.co.uk/support/the-langwith-society)

**GambleAware**

Supporters must be  
18 years or over



**JOIN**



**TODAY**



The Langwith Society has been  
supporting groups and activities in  
the Langwiths and the Whaleys for  
many years.

Lifetime Membership costs just £1  
for anyone living in any of the  
Langwiths or any of the Whaleys.

The Langwith Society will help  
new groups get established, aid  
projects seek grant funding and  
help organise events in our  
community.

**There is so much we can achieve  
together – so come on in.**

Please complete the application  
form at [bit.ly/TLSApply](http://bit.ly/TLSApply) or scan  
the QR code or visit  
[thelangwithsociety.wordpress.com](http://thelangwithsociety.wordpress.com)